

ISSUE 2

LUXURY LIFESTYLE &

EQUESTRIAN CONSTRUCTION



HARRISON LANE

DESIGN | CONSTRUCTION | CIVIL

OVER 10 YEARS OF EXPERIENCED EQUESTRIAN DESIGN

*We wholeheartedly understand
equestrian requirements*

Since 2012 we have enjoyed completing many successful equestrian construction projects, from private family stables and barns through to large scale commercial quarantine facilities and veterinary clinics.

Founder Laura Daly has a lifetime of experience with horses, ensuring well considered design and the wellbeing of your horses and the safety of those who work around them.

We will work with you to design a facility you will love and enjoy for many years to come.



Our inspiration comes from the love of the horse and lies at the heart of our design and construction of beautiful stables, barns and country homes.

Whatever your dreams, we are here to bring them to life and we love sharing this special journey with each and every client.



DELIVERING A SEAMLESS EXPERIENCE



With a strong heritage in equestrian construction that has been complimented by the addition of country homes and earthworks, Harrison Lane offers a seamless experience for clients in the design, construction and development of their luxury equestrian and lifestyle properties.

Projects range from building country cottages or barns integrated with stables and accomodation, through to elegant modern family homes, and farm or lifestyle projects that incorporate the planning and execution of everything on the property; from fencing, farm tracks, equestrian facilities, barns and country homes.

Harrison Lane continues to build a reputation for quality construction and attention to detail.

Pictured left: Directors Scott Munro and Laura Daly at the 2022 Master Builders House of the Year awards.

Laura recently sat down for a chat with journalist Nadene Hall to reflect on the last ten years of Harrison Lane.

Laura Daly was made redundant on a Monday afternoon in 2012. On Tuesday morning she walked back into the office and asked to buy the company website and the work ute. She was sure the brand of Econobuilt she'd worked for over the previous 15 months just needed a bit more time to succeed.

Ten years later, and in 2022 Laura has led the Harrison Lane team to its 11th Award at the Registered Master Builder's House of the Year Awards. This year they took out the Regional Supreme House of the Year for Auckland/Northland/Coromandel in the \$750,000 - \$1 million range for their character-filled home in Karaka.



"Working towards and winning the awards is the icing on the cake and we're extremely grateful to our immediate and extended working family and clients that we have around us that enable us to do this. We know on a daily basis we deliver the best product and service."

The icing on the cake for Laura is all the happy clients over the past decade.

"They welcome us back long after the builds are finished and for me, the longevity of the relationships is the most important aspect. We aren't here to be a 5-minute wonder. We're looking forward to sharing many more awards with our HL family."



Running an award-winning construction business wasn't why English-born Laura decided to make New Zealand home. She came here in 2005 on her OE to work with horses after her grandmother gave her some money with one criterion.

"She told me not to do anything sensible with it! So I flew here with one contact in Hawkes Bay and one phone number for a friend of a friend in Auckland. The Hawkes Bay connection didn't work out, so I rang the number and the person who answered said 'come work for me'."



Laura worked as a groom for a professional showjumper, then got a job with Ross Coles, Huntsman of the Pakuranga Hunt for 25 years.

When construction company Econobuilt formed a rural division called Harrison Lane specialising

in equestrian facilities, Laura moved into design consultation, advising rural clients on stable and arena projects.

When Econobuilt decided it wanted to concentrate on other projects and made her redundant, Laura decided Harrison Lane needed a second chance.

"The speculation was a five percent chance of succeeding," she laughs. "Our first job was a big, beautiful stable in Huapai and it still looks really good today. Even now, I always enjoy catching up with Harrison Lane owners and I really love hosting our current and past clients when we go to Horse of the Year."



Scott Munro was one of the subcontractors who worked with Laura when she took over the company. He grew up on a farm in Pukekawa and started his building apprenticeship when he was 16. His first 13 years of experience included home and commercial construction including warehouses and the Pukekohe cinema.

"He's a very quiet guy. I think in the first six months he barely said 10 words to me. But he is a really good builder and we worked together really well."

When Scott asked for an increase in his contract rate, Laura decided to make him an offer he couldn't refuse.

"I told him I'd go one better and we could go into business together. And to my surprise he said yes, even after I explained – and I was only half-joking – that it is going to be like a marriage!"

Today, Laura is Harrison Lane's managing director and Scott is the project manager, heading the building team which now numbers over 10. The

company has its own designers, builders, and specialist earthworks team, constructing bespoke country homes, equestrian complexes, arenas, and barns.



"As joint owners, the two of us are far stronger together," says Laura. "We've now done over 100 projects in 10 years, and many are repeat clients – we do one build for someone, then another and another. A lot of our early clients get us in to do renovations, sell their property, then we build them another house on their new farm."

There are two important keys to their success in creating unique country homes and buildings. Laura and Scott oversee every project, right down to the finest details.

"We stay involved the whole way through, from the introduction right down to every tap, every tile, every touch-up."

The process means clients get a custom project with people who know and care about every detail.



"It's a very enjoyable process, rather than dealing with a salesperson whose motivation is to sell a design, then a rotation of contractors and subcontractors who might be working on a range of other houses at the same time."

The other key to providing clients with a unique home is creating a relationship based on trust and honesty.

"For us, it's about keeping people informed of the real journey, not telling them what they want to hear. We can always come up with solutions for something that might at first look like it's going to cost a fortune.

"We've built value into our processes, like having our own architectural designer in-house, our own earthwork machinery, a tight team of builders. It's that total project management that gives clients good value for money."

Laura and Scott also understand first-hand the stress homeowners face when building. Both have built their own homes – Scott is onto house number three – and that means they also bring the benefit of hindsight.

"We can talk to you about our lessons from each project, the things we would do differently. We know how much a building costs so we can offer guidance and still create something very personal, practical, functional, safe, timeless."

The best part of the job is working with people to make a project a pleasant experience.

"I really love working with people," says Laura. "I so enjoy getting to know them and forming relationships. We want it to be a fun journey. If you see our number come up on your phone, we want you to be happy to take that call."

Thank you to all of our clients who have shared the journey with us so far.

CELEBRATING 10 YEARS IN 2022



AESTHETICS BALANCED WITH OPTIMAL EQUESTRIAN FUNCTIONALITY

Our experience enables us to help you balance your equestrian wish list with other aesthetic and functional parameters to ensure the end result is beautiful, practical and one you will be thrilled with.

Every build is designed specifically to your tastes, lifestyle requirements, property and surrounding landscape.

Uncompromised quality; built to enjoy for generations to come.

A beautiful blend of quality fixtures, innovative design elements and functional, energy-efficient materials will feature throughout your beautiful Harrison Lane barn or stable, future-proofing your investment for years to come.



The stables are an absolute credit to Harrison Lane and I have had builders on site (from other projects) comment that the stables are “a work of art”! We couldn’t be more thrilled with the finished building. Our ponies are relaxed and happy in their spacious surroundings and we are delighted with the ease of efficiency in regards to the layout of the wash bays and tack room. The undercover tie up area and the generous boxes have a great feel.

We couldn’t be more thrilled and highly recommend Harrison Lane to anyone wanting to build a barn or stables, from an efficient company who kept our tight budget well on track.

NICKI - AUCKLAND

A SEAMLESS EXPERIENCE

From concept to completion, we work with you to take care of all aspects of your building project.

Our total project management service will seamlessly take care of master planning of your site including resource consents, drainage, contouring, driveways, and the construction of your country home, farm buildings, barns, stables, arenas and all-weather riding tracks.

That means there’s no need for you to juggle multiple subcontractors or tricky consent processes. We take the stress out of your project by managing it for you.



EQUESTRIAN CONSTRUCTION

- Stables
- Barns with stables and integrated accommodation
- Commercial equestrian facilities
- Veterinary clinics
- Truck & boat storage barns
- Farm implement storage barns
- Arenas
- Covered yards
- Round pens

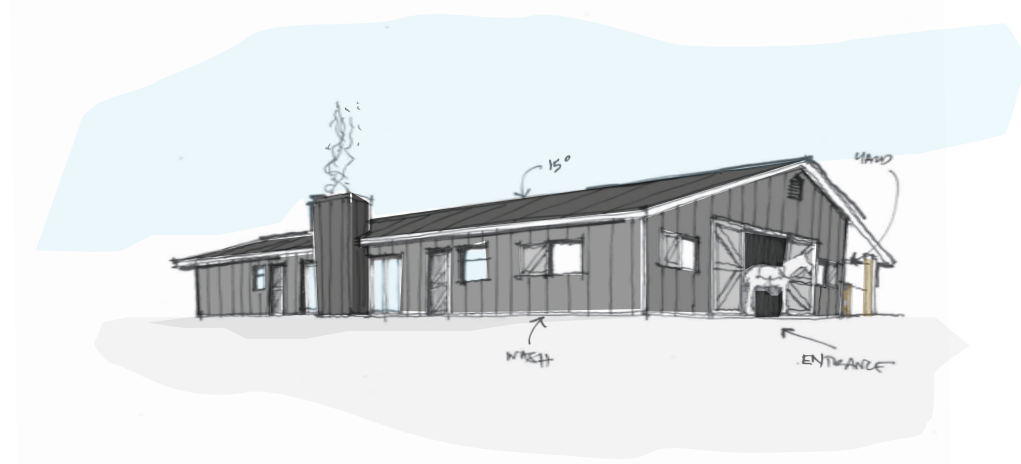
COUNTRY HOMES

- Minor dwellings
- Country cottages
- Country homes of all sizes
- Barn-style homes
- Wine cellars
- Worker’s accommodation
- Renovations
- Swimming pools
- Tennis courts

CIVIL

- Scheme plans
- Site development
- Septic systems & water tanks
- Building platforms
- Driveways
- Drainage
- Contouring
- Irrigation & drainage
- Landscaping & fencing

END-TO-END RURAL CONSTRUCTION



Understanding your vision is important to us.

Harrison Lane will manage the entire process to develop your vision for the property. Starting with initial planning, concept, consultancy, design and consent processes, through to realisation of your vision through construction of new buildings and surrounding landscaping and facilities.

We believe that this understanding starts with planning your site - presenting your vision through well considered architecture and landscaping.

Like most things in life preparation is key! Developing a scheme plan ahead of starting your project with us produces a clear vision for your entire property, and the stages in which we will develop it.

An accurate scheme plan allows pricing of works and enables us to make educated decisions about how we approach the development and construction at your property.



A scheme plan is an integral tool to reduce pressures of unexpected mid-project decision making, provide accurate cost assessment and a clear long-term vision for your property. It will inform decisions and establish requirements to progress your project.

THE PROCESS WORKING TOGETHER

1. THE BRIEF	Share your vision and goals with us
2. PRELIMINARY FEE PROPOSAL	We prepare a fee proposal for preliminary design concepts based on your design brief.
3. PRE DESIGN	We respond to your brief
4. DESIGN CONCEPT	We develop your finalised brief into concepts
5. DEVELOPED DESIGN	We produce full designs of your finalised concept
6. PROJECT COSTINGS	We prepare a detailed quote to firm up costings for your project; including additional services and earthworks.
7. BUILDING CONTRACT & TIME LINE	A building contract is formed and resources allocated to your project
8. DETAILED DESIGN AND BUILDING CONSENT PACK	We prepare final drawings and all necessary documentation for building consent submission
9. BUILDING CONSENT APPLICATION	We submit to council on your behalf for processing.

OUR STANDARDS



TRUST

We trust ourselves and all those involved to deliver the best possible result. We embrace the opportunity to work together to achieve an exceptional outcome.



RESPECT

We respect everyone's time and energy has limits – we will work with you to understand and value yours, ensuring the way we work together is productive and rewarding.



COMMUNICATION

We pride ourselves in our high level of communication and endeavour to make ourselves available at all times to our clients. During your build we'll keep in touch with regular site meetings, phone calls and track progress through your own online project management portal.



FAMILY

Our work family is extremely important to us and we are committed to building and maintaining a team spirit we are proud of.

MEET OUR DIRECTORS



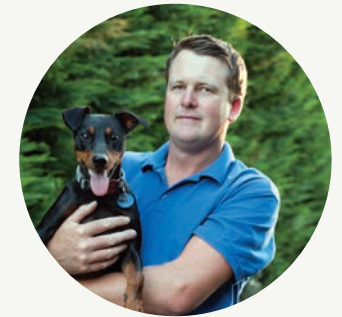
Laura Daly
SALES

Behind every building project is a unique story and it is an absolute privilege to join our clients on this very personal journey. The long-standing relationships forged with our clients while their project takes shape is extremely rewarding, and I am very grateful to enjoy what I do so much.

Living the equestrian country lifestyle is a dream come true and in my spare time the horses and show jumping are my number one priority. Fortunately, that is a connection I often share with our clients and has been the beginning of many great relationships.

Over the last ten years our talented team of registered Master Builders has evolved, and a close bond developed, knowing we can depend on each other to deliver excellence every day. I am thrilled with the earth works extension to our construction business, it has allowed us to streamline and fully control our design/build and lifestyle property development projects from start to finish.

When I had the opportunity to take on Harrison Lane as a young company in 2012 my vision was to build beautiful stables that people would dream of. Now Harrison Lane has gone on to deliver exceptional quality country homes and some of the dreams I had have been realised. We continue to build on the goal beyond the goal, constantly tweaking to improve our product delivery and service.



Scott Munro
CONSTRUCTION

With more than 22 years' experience in the construction industry, Scott has been leading teams at Harrison Lane for the past 8.

"Coming from a rural upbringing, I grew up with all of the great hobbies associated with the Kiwi rural lifestyle – with a particular interest in off road racing. I share a vision with our clients to build facilities that will both protect and enhance enjoyment of their family lifestyle and prized possessions – be it a boat, race car or other!

It is hugely rewarding to oversee the development of a lifestyle property from concept to completion; allowing me to combine my interest and experience in construction with a lifestyle I have grown up with."

We are constantly setting ourselves new challenges that drive the business forward and maintain an excellent client experience. We are working towards some of the next big goals we have in place this year.

GOODWOOD BARN.



BRINGING FAMILY TOGETHER.

The Goodwood Barn is an extraordinary barn – it was designed to bring a family together through their personal loves: horses, dancing, entertaining and cars.

The barn comprises of four distinctive areas, for a family with diverse activities. Colours and detailing on the Barn were all carefully chosen to echo the owners elegant country style throughout the property.

Our total project management including the complete construction of the barn consisted of; construction of the sand and shell arena,

landscaping & planting, reshaping and re-seeding of paddocks and lawn areas, as well as renovation and painting of an older barn on the property to match the new one.

A resource consent was required for the activity of building the barn and arena which applied for on behalf of the client and followed through to sign of and obtaining code of compliance.



For the equestrian; three generous stables – with the option of making one double size, hot and cold wash down and grooming area with equine safety flooring.

There is a separate tack room with custom made joinery for stowage and housing of the specialist equi gear which incorporates bespoke cabinetry to reflect finish and materials used in the house – shaker style and Caesarstone bench top.

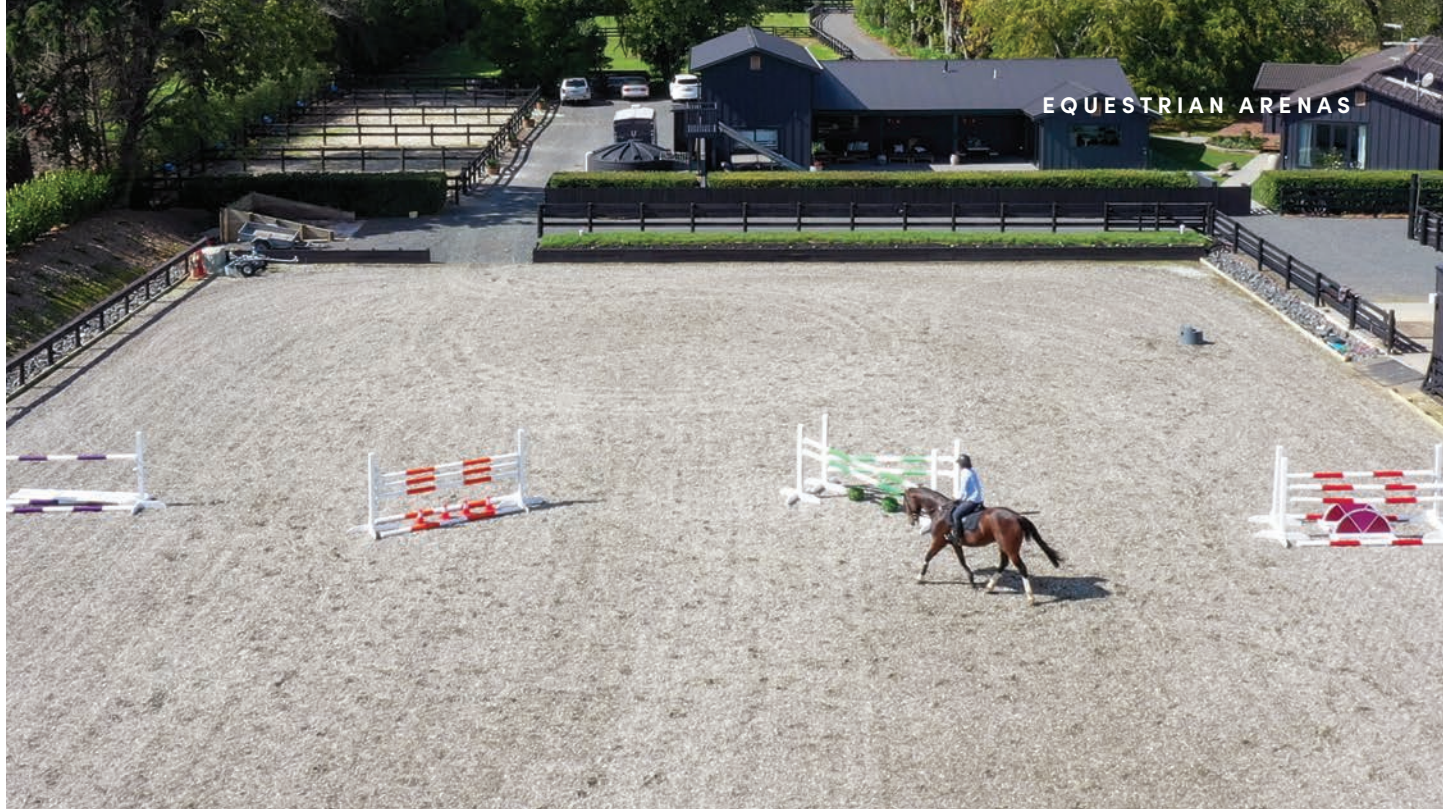
The feed room has 6 built-in feed bins for rodent proof storage of horse feed, shelving and cubby units, and racks for hanging rugs.



On the first floor the entertainment area has been carefully thought out to allow for a bar area, large 'L' shaped couches for lounging and watching the TV on. Again French doors open out onto the north facing deck with glass balustrade for an uninterrupted view of the beautiful rural setting.



The dance studio has a rebated concrete floor to allow for a sprung oak dance floor, the full wall of mirrors and 3 large French doors create a light and warm area for dance lessons and practice.



ARENA CONSTRUCTION

We are constantly refining our arena construction expertise. Our construction methods are centred around achieving the right balance of compaction, binding and density in the surface blend; which we have found is the key to engineering a performance surface that is a pleasure to ride on and reduces impact and stress to joints and ligaments.



- | | | |
|----------------------------------|----------------------------------|-------------------------|
| Arenas | Yards | Drainage |
| Arena lighting | Landscaping & fencing | Contouring |
| All-weather riding tracks | Irrigation & drainage | Site development |
| Round pens | Driveways | |

CHOOSING YOUR ARENA CONSTRUCTION METHOD AND RIDING SURFACE



With a number of surfaces on the market to choose from we will work closely with you to determine which base construction and surface blend will perform the best considering your unique environment, requirements and budget.

EBB & FLOW ARENA SYSTEM

The Ebb & Flow arena system maintains optimum moisture levels and surface performance through an integrated combination of drainage pipes and a liner to contain the water. A balance tank maintains the perfect water level from underneath the surface.

The combination of drainage and irrigation from underneath the arena maintains the balance of moisture for a consistent riding surface year round.

FREE DRAINING ARENA BASE

A free draining base consists of subsoil drainage constructed with layers of hardfill underneath the arena to allow water to drain quickly.

Overhead irrigation is preferable to maintain a consistent riding surface.

Moisture level is the key to a perfect arena surface; think of what it's like to ride on the beach at low tide!



The Harrison Lane Ebb & Flow system consistently maintains optimum moisture levels and surface performance through an integrated combination of:

- Drainage pipes under the surface layer of sand
- A waterproof liner to contain the water
- A sump/balance tank to pre-set the perfect water level

The combined function of the drainage and irrigation system creates a continuous balance of moisture from underneath the arena, to best prepare the perfect riding surface.

BENEFITS

- Can be built in difficult areas as drainage isn't a problem
- No crown or slope required
- Heavy rain is not a problem as surface water is cleared quickly and discharged via the balance tanks.



ARENA FOOTING

Performance arena footing for performance horses.

Now you've selected the perfect arena base, create the perfect riding surface with sand & GGT Fibre – for soundness and performance.

Blending black sand with GGT Fibre has optimal binding and compaction properties, which creates a stable surface that provides cushioning with minimal shifting.

We are constantly seeking ways to improve arena construction methods. Over the years we have worked together with Stable 88 (NZ distributor of the German made GGT Fibre product) to perfect our own surface blend for local conditions.



GGT JUMP BLEND GEOTECH FIBRE (POLYSOLS POLYESTER)

BENEFITS

- Cushioning to protect joints and ligaments
- Prevents packing
- Surface is stable with minimal shifting
- Cushioning provides better “spring” and energy rebound
- Facilitates a more secure landing for jumping
- Retains moisture through high water storage capacity

WOODHILL BLACK SAND

BENEFITS

- Less glare
- Limited dust due to a very low silt content
- Water improves the binding properties of black sand. Black sand is high density and can hold ten times its own weight in water.
- CBR (Californian Bearing Ratio – a strength and flex test) and shear factors peak with moisture, therefore stabilising the ground particularly before and after a fence.
- Woodhill Black Sand in particular has a very low iron content when compared with other black sands. This affects the density and heat properties of the sand.



“There are many ways riders can help keep their horses musculoskeletal system healthy and prevent injury. A diet that provides the correct nutrients to assist bone, connective tissue and muscle health, correctly fitted gear, a proper warm up before training, and a warm down period after work.

Another key factor to musculoskeletal health is the surface a horse is asked to work on. Safe footing to prevent sliding and stress on tendons and ligaments is so important.

The impact on horses cartilage and ultimately their bones when performing at any level of equestrian sport can be affected by working on a poor surface. To achieve the best results in your equestrian endeavours as well as keeping your horse healthy, chose an engineered surface product that will reduce impact on your horses musculoskeletal system.”

DR ALEX LEANDER BVSC MPhil

WORLD CLASS ARENA FOOTING AVAILABLE TO RIDERS AT ABDERRY

Legendary Franklin equestrian Cheski Brown has spent more than 50 years working with horses and riders, and she's still keen to give the NZ equestrian community the very best training facilities possible.



She's just installed a radical new 3200 square metre ebb & flow arena at her Abderry Equine Services facility in Karaka, with a world-class riding surface that also captures stormwater and channels it into a one million litre storage flexitank for later use.

Olympic eventing champion Blyth Tait and local MP Andrew Bayly officially opened the arena in front of local riders who got to try it out for free at an open day in September 22.

She sees the arena, constructed by Harrison Lane, as part of her legacy to the district's horse lovers.

"We have riders from all over New Zealand who come here to train. An arena like this means they can work throughout winter when often it's not physically possible with older-style facilities where the footing can become inconsistent in very wet weather. Our goal is to help train riders and horses in a safe environment, and the bonus with this one is it's also recycling water for us to re-use in drier times."

"A good arena surface means the horses are happy in their work and will jump boldly because they have confidence that the footing on take-off and landing will be predictably constant"

"A good arena surface means the horses are happy in their work and will jump boldly because they have confidence that the footing on take-off and landing will be predictably constant"

CHESKI BROWN, ABDERRY EQUINE SERVICES



Maddy Cutfield and Watch Me Fly testing out the new Ebb & Flow arena at Abderry Equine Services

When it rains, water drains through thick layers of shredded GGT Fibre; a geotextile blended with sand into a waterproof lining. Drains carry the overflow into the flexitank for later use.

However, some water remains in the lining, helping to hydrate the fibre. It means a consistent cushioning for the horses to work on, no dust in summer, and no mud or slush in winter.

Harrison Lane's Laura Daly says the other enormous benefit of this type of system is how little maintenance is required compared to other types of arenas.

"When we have heavy downpours of rain – there's still water sitting in paddocks and drains, but the arena surface is perfect. All the excess water quickly drains away from the arena.

"I've got the same type of arena at home and the other big thing I've found is how little time I now spend maintaining a perfect riding surface."



Light, space and a natural palette of colour and materials work harmoniously to create a wonderful restful atmosphere. It's a pleasure to spend time there and the horses are comfortable all year round.

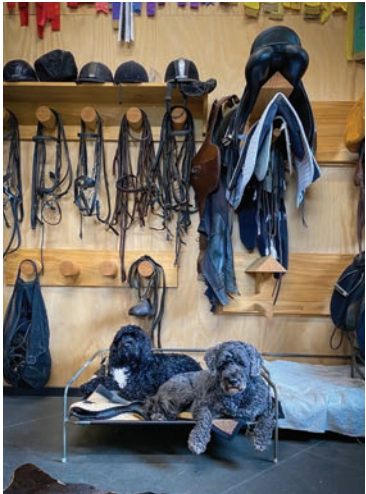
KARAKA COUNTRY STABLES

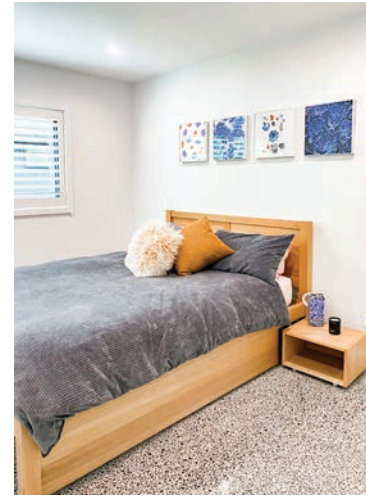


The Ascot Stables is a favourite of ours, with a gable roof design that echoes traditional style and sits beautifully within country landscapes.

The stable complex is a compact footprint, yet it accommodates a generous layout of facilities for the horses and those who work with them.

A large verandah offers protection from the elements, while the pitched ceilings keep the stables light and airy – perfect for enjoying the sunny days!





SERIOUS FUN; A LIFESTYLE PROJECT

“ Our vision of bringing together the old and the new to create a cohesive and unique property that fits our life and we can enjoy for years to come, has been so beautifully delivered and is now so loved (especially the slide ;) by all. Thank you!

NICKY & KELVIN / AUCKLAND

”



Our lovely clients had a vision to provide a practical space to bring family and friends together, creating a connection with their existing home that compliments the functionality of the whole property and enhances enjoyment of their lifestyle.

This unique lifestyle project encompassed many facets; from renovations to the existing home to create a new master suite, through to the construction of a pool and new barn that accommodates horse truck storage, garaging, workshop, pool pavilion and a one bedroom minor dwelling. The addition of an Ebb & Flow equestrian arena completed the project.



NEWBURY BARN



The first floor incorporates a large open games room with kitchenette – opening out on timber deck with a gorgeous view over the arena, two very generous rooms for home gym equipment and office space, fully appointed bathroom and separate toilet, store cupboard and access into the roof space.



When our clients made the decision to move from Remuera out to Karaka, they had their heart set on a beautiful stable complex over looking a fabulous arena.

THE STABLE COMPLEX IS APPOINTED WITH;

- 3 Point entry/exit concrete breezeway
- 4 Large stables fully enclosed to 2.4m high, with sliding doors for equine entry and exit, sliding shutters for ventilation and light, complete with auto waterers, hay feeders and rubber stable comfort floors for ease of cleaning.
- Dedicated wash bay with recessed LED lighting, equine solarium, 2 x hot/cold water hosing points, non slip equine safety flooring, and storage for shampoo, bottles, sponges etc
- Feed room with built in feed bins, shelving for storage and sink
- Rug room with built in cabinetry for storage of rugs, washing machine and dryer
- Tack room with custom made saddle and bridle hanging, cubby units for keeping all the equine essentials tidy, full length workbench with sink, drawers and further storage
- Access in to the covered truck bay
- Access to the 65x30 Arena with free draining base, sand & fibre riding surface and overhead irrigation.
- Down stairs WC



‘SHEER STYLE’

A stunning example of our Highgrove design, this award-winning project encompassed the construction of a country home with integrated stables, a GGT fibre arena and additional farm buildings.



Reflecting on happy memories of his days staying in the shearers' quarters at Massey University, the owner of this country home hoped to create a similar atmosphere with the new sophisticated apartment-style dwelling.

The resulting residence speaks volumes. It's four bedrooms are well served by four exquisitely appointed bathrooms. Expansive open-plan living provides an opulent social gathering space.

A well-lit floating staircase with timber bannister leads up to the open-layout kitchen, dining and lounge spaces which survey the GGT Fibre and sand arena below.

Downstairs – a four stable complex offers tie ups/wash down area, tack and feed rooms and extensive garaging.



BEDROOMS 4 / BATHROOMS 4 / SIZE 600+ SQM



A BARN DESIGNED FOR MORE THAN ONE KIND OF HORSE POWER



Multi-functional barns have become a popular choice for clients, accommodating spaces for families to celebrate their unique interests. This barn combines a family's love of more than one kind of horse power!

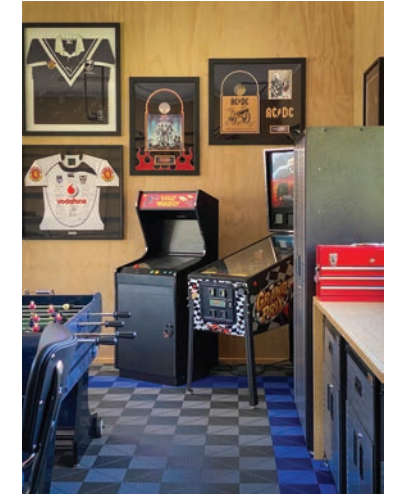
This lifestyle construction project was completed with a number of elements; The design and build of the multi-purpose barn, construction of arena, driveway construction and fencing on the property.

Schist features elevate the look and create harmony between the barn aesthetic and the existing residence and property features.

A 55x30 sand arena was constructed at the rear of the property enjoying a view of the pond and landscaping.

The Garage

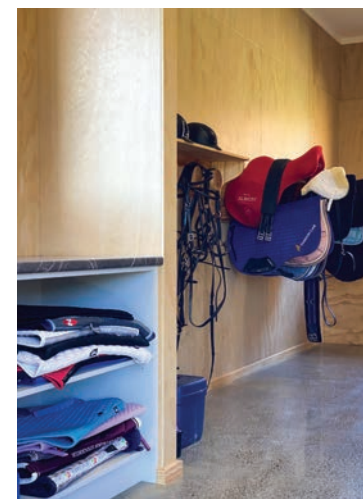
Meticulously finished to celebrate an epic classic car collection with interesting additions of memorabilia and retro arcade games finishing the space.



The Stables

Are integrated into the barn and have two very spacious boxes to ensure total comfort for the horses. Positioned to protect from the prevailing wind and weather, a vaulted ceiling creates a spacious feel and makes the most of the sun.

A combined tack and feed room is packed with practical storage for tack and accessories, with a work bench and shelving to neatly organise feed and supplements.



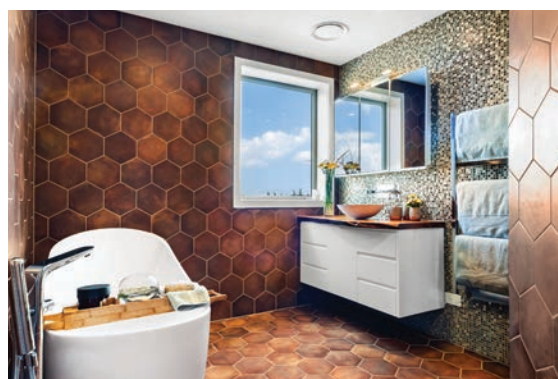
HARRISON LANE SHOW BARN

We'd be delighted to show you around our Highgrove barn-style show home located at our office in Waiau Pa.

A perfect example of our extended skillset, the property features a beautiful barn-style country home with integrated stables and extensive garaging and workshop space.

It is perfectly set up for equestrian activities with a 65x35 Ebb & Flow arena complete with show jumps and 1km sand and shell riding track.



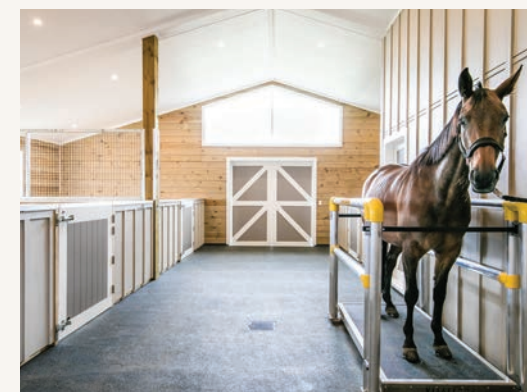


Highgrove is an expansive two-storey country home with up to four bedrooms, open plan living and extensive garaging. From the upstairs living areas and deck, you can enjoy a rural outlook or entertain comfortably.

Downstairs offers flexibility to be configured as office space, more accommodation, entertaining and also incorporates three or four stables or additional living.

EQUESTRIAN FITNESS & REHABILITATION EQUIPMENT.

Harrison Lane has partnered with Stable 88 to provide clients with the very best in equine fitness and rehabilitation equipment, which can be incorporated into your stables during the design stages.



VITAFLOOR.

VitaFloor's heavily researched vibration platform for horses are veterinarian recommended to provide an incomparable non-invasive solution for training, rehabilitation and injury prevention.



Q-LINE SOLARIUM.

Q-line® products help achieve and maintain top condition in your horses. Their high quality is known and acknowledged worldwide. The products are designed and built according to the highest norms and technological standards and the safety of your horse is the prime focus in the designs. Q-line® products are designed and manufactured in The Netherlands

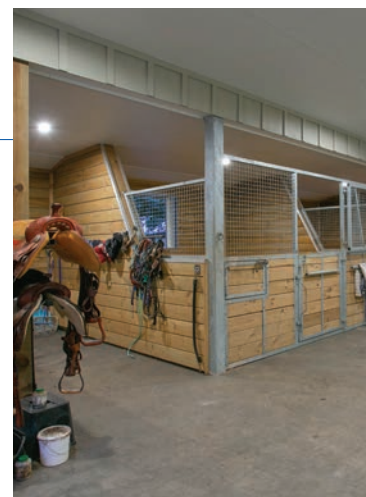


OXFORD BARN TAMAHERE

An elegant example of our Oxford barn, the apartment upstairs is exceptionally well appointed with a large master with walk in robe, guest bedroom with office space and spacious bathroom, with a third bedroom and second bathroom on the ground floor.

The upstairs living opens out onto a generous deck that overlooks the arena.

A spacious stable complex is well equipped with five boxes, full sized arena, round yard, sand yards and additional farm buildings.



WADDESDON STABLES



The horses are very comfortable in the Waddesdon stable complex. A central breezeway connects four loose boxes, double wash bay, feed room, and tack room that is equipped with a separate toilet & kitchenette, ensuring everything is close at hand when working with the horses.

The vaulted ceiling creates light and airy proportions, while the four stable boxes have

shutters to let in lots of natural light, ventilation, and offer protection from the weather. The spacious boxes open out into post and rail yards.

Large sliding barn doors at each end protect the building from the elements when required, and allow the stables to be opened up for additional lighting and airflow.



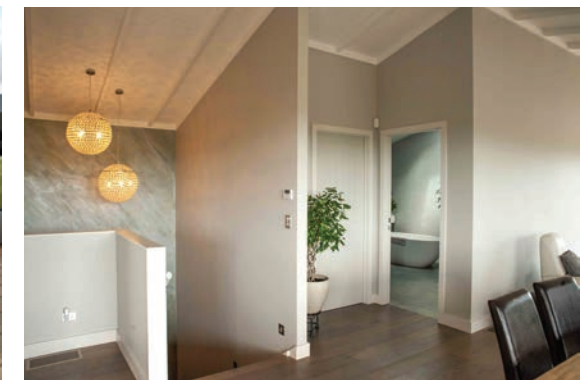
OXFORD BARN KARAKA



A crisp white example of our Oxford design with integrated living quarters, this modern barn has 4-5 spacious stables, tack room, feed room and double wash down bays; all accessed off a central, well lit and ventilated breezeway.

OXFORD BARN FEATURES

Upstairs a stunning modern apartment accomodates two bedrooms and an open plan living area that flows out to a large deck with a perfect view of the arena.



COMMERCIAL FACILITIES

With extensive experience in the construction of commercial facilities we have completed projects that include livery/agistment centres, international quarantine facilities, pet crematoriums, and veterinarian practices.



PAKURANGA HUNT KENNELS.

These kennels were custom designed and built for the Pakuranga Hunt and show what a distinctive and highly practical combination brick with board and batten can be.



WAIKATO EQUINE VETERINARY CENTRE

The Waikato Equine Veterinary Centre is a superb award-winning facility designed specifically to facilitate the provision of world class equine veterinary care.



IRT QUARANTINE FACILITY

IRT is a world class quarantine facility for international transport of race and sport horses.



INVESTED IN THE EQUESTRIAN COMMUNITY

We are committed to contributing to the success of the sport that so many of our clients participate in.

Over the years we have enjoyed many long standing relationships within the sport, such as sponsorship of Land Rover Horse of the Year, AMDG Para Dressage Championship, local pony club events, horse trials and most recently our sponsorship of the national ESNZ Harrison Lane Pro-Am championship series and riders Laura Inkster and Cooper Oborn.



“During the build period, Laura and her team were incredibly professional to work with. Always making themselves available to address any queries or deal with decisions on the project, made for a very fluid relationship.

Communication in any circumstance is vital, and Harrison Lane exceeded expectations in this area and every other.”

RICHARD COLE - DIRECTOR IRT. AUCKLAND

COUNTRY HOMES



We would love to build your family home!

From 60 square metres to 600+ square metres, we build country homes of all sizes that are warm, inviting and rest harmoniously in a rural setting.

Our bespoke country homes are built with the highest standard of workmanship, with every home designed to meet your needs while making the most of the spacious natural environment and landscapes surrounding your property.

WWW.COUNTRYHOMES.CO.NZ

LIFESTYLE DESIGN & CONSTRUCTION



While some dream of stables, others have different passions.

Together we can create a purpose designed space that is personalised to your family's interests.



*“Logic will get you from A to B,
imagination will take you anywhere”*

ALBERT EINSTEIN



LUXURY LIFESTYLE & EQUESTRIAN CONSTRUCTION

Equestrian construction

Barns

Arenas

Yards

Riding tracks

Round pens

Farm development

Country homes

Workers' accommodation

Scheme plans

Resource consents

Landscaping & fencing

Irrigation & drainage

Driveways

Drainage

Contouring

Site development



CONTACT LAURA 021 722 578
LAURAD@HARRISONLANE.CO.NZ